

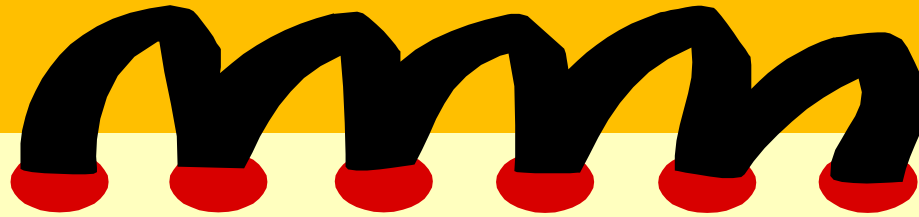
Mid-Level Developmental Assessment (MLDA)

October 2014

Presenter: Dr. Sandy Kyriakopoulos



What is a Mid-Level Developmental Assessment (MLDA)?



MLDA:

- *brief, timely assessment*
- *3-5.11 year-old children*
- *Mild-moderate delays or behavioral concerns*
- *All areas of development*
- *Recommendations*
 - *TEACHERS*
 - *PARENTS*
 - *MDs*



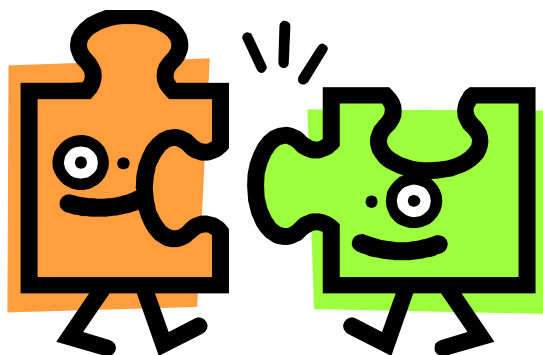
Why did MLDA come to be?



- **High rate of preschool expulsions**
+ 70% expelled 3 or more times from other preschools
- **Ineligible for services**
- **Long wait for appointments**

GOALS of MLDA

- Reach children before problems escalate



- Help children, and their families, receive services quickly and early, before they get left behind

What makes up a Mid-Level Developmental Assessment?

**FAMILY
INTERVIEW**

**PARENTING
STRESS
INDEX
(PSI-IV)**

DAYC-2

- Communication
- Physical
- Social-Emotional
- Cognitive
- Adaptive

**BEHAVIORAL
OBSERVATIONS**

**PEDIATRIC
INFORMATION**

**SCHOOL
OBSERVATION**

**PARENT-CHILD
INTERACTIONS**

PRINCIPLES OF MLDA



Parents/caregivers as partners in assessment process



Trained professionals who understand child development



Use of collateral information from other providers, including pediatrician



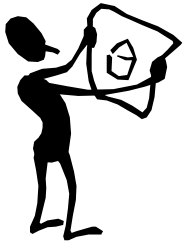
Valid, reliable assessment tools measuring full range of development



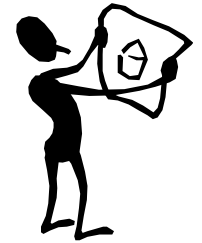
Assessment of child in natural, non-threatening settings



Identification of strengths, concerns and challenges to determine and connect to services



INDIVIDUALIZED FAMILY SERVICE PLAN



Preschool or daycare	<ul style="list-style-type: none">• Begin attending a preschool program.
Mental Health Services <ul style="list-style-type: none">• Child• Family	<ul style="list-style-type: none">• Mother and child should participate in a relation-based play therapy program within the home.• Mother should continue to receive therapy services through ABC Clinic.
Family Support Services	<ul style="list-style-type: none">• The family should continue to participate regularly in the NFN program.
Medical/Dental	<ul style="list-style-type: none">• Continue attending all medical and dental appointments.
Case Management	<ul style="list-style-type: none">• A providers meeting should be scheduled with DCF and others who are involved with the family to review the results and recommendations.
Other	<ul style="list-style-type: none">• Participate in peer-group activities to learn and practice social skills.



SAMPLE MLDA

THANK YOU!



Contact:

skyriakopoulos@thevillage.org